

APPROVED
Kaunas Education Center of Technologies
by the Director's in 2024 February 20
Order No 01-39

REGULATIONS OF THE INTERNATIONAL PROFESSIONAL EXCELLENCE COMPETITION "JOINER 2024"

CHAPTER I GENERAL PROVISIONS

1. The Regulations of the International Professional Excellence Competition "Stalius 2024" (hereinafter referred to as "the Competition") regulate the objectives of the Competition, the participants, the organisation of the Competition, the evaluation and the awarding of prizes.
2. The organiser of the competition is the Sectoral Practical Training Centre for Innovation in Wood Technology and Furniture Production of Kaunas Technological Training Centre and the Woodworking Department.
3. Competition objectives:
 - 3.1. to develop students' professional excellence and raise the prestige of vocational training;
 - 3.2. to strengthen students' motivation;
 - 3.3. to foster creativity, initiative and cooperation among students;
 - 3.4. to develop relations with business institutions, Lithuanian and foreign vocational training institutions;
4. The competition time is 21 March 2024, 9⁰⁰ - 18⁰⁰. Lithuanian time.
5. Participants are vocational school students enrolled in vocational training programmes in the woodworking sector, carpentry/furniture maker and woodworking machinist.

CHAPTER II ORGANISING THE COMPETITION

6. The competition is open to 1 student from each educational establishment. Participants must be aged up to 25 years. (It is recommended to select a back-up contestant in case of illness of the main contestant).
7. The competitors carry out a practical task of making a window using hand-held power tools from the provided drawings (Annex 1) from the blanks received. **Final drawing can be changed up to 10 %.**
8. Duration of the competition task 6⁰⁰ hours - start: 21 March 2024 10⁰⁰ hours, end: 21 March 2024 17⁰⁰ hours. Lunch break 13⁰⁰-13⁴⁵ hours
9. Participant of a competition must provide themselves with work clothes, footwear and personal protective equipment.
10. The competitor must bring the hand and power tools needed to perform the competition task. **No pre-made templates are to be used for the task.**
11. The participant must have a student ID.
12. Before carrying out the practical work, the competitors shall be familiarised with the rules of safe working by signing the "Workplace health and safety briefing record sheet" and the "Fire safety briefing record sheet".
13. The organiser of the competition shall provide each participant with materials (window will be made from ash wood) and suitable working conditions that meet professional and occupational safety requirements for the performance of the competition task.

14. The work of the contestants is evaluated by the evaluation committee made up of vocational teachers who accompanied the contestants:

14.1. The evaluation committee of the competition chooses the chairman of the evaluation committee by voting from among the vocational teachers (who accompanied the contestants);

14.2. A number of the committee members has to be formed of the number of vocational teachers who accompanied the contestants;

14.3. The members of the committee evaluate all the participants in the competition with the exception of the participant accompanied to the competition.

15. Contest participants fill in the [PARTICIPATION FORM](#) until March 13 2023.

16. Photography and filming of contestants and contest-related activities and publishing in the media (including social media) will be permitted at the venue of the Professional Excellence Competition.

CHAPTER III EVALUATION

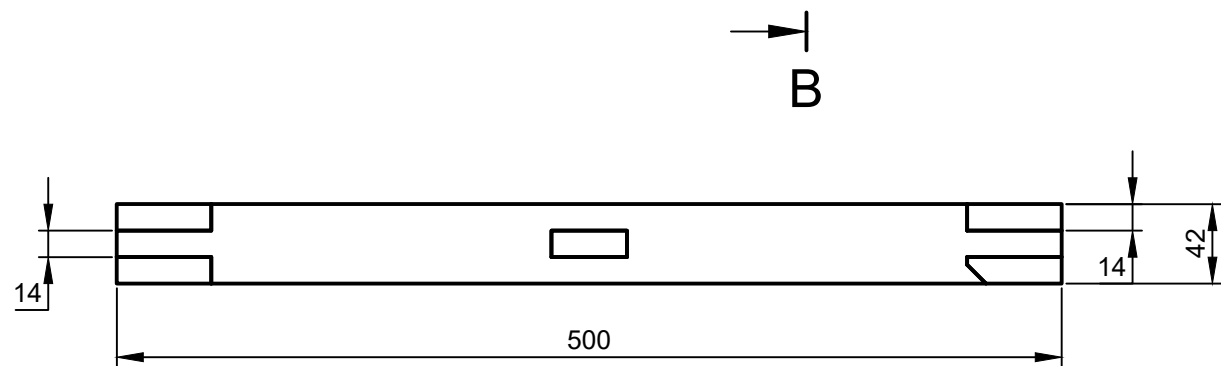
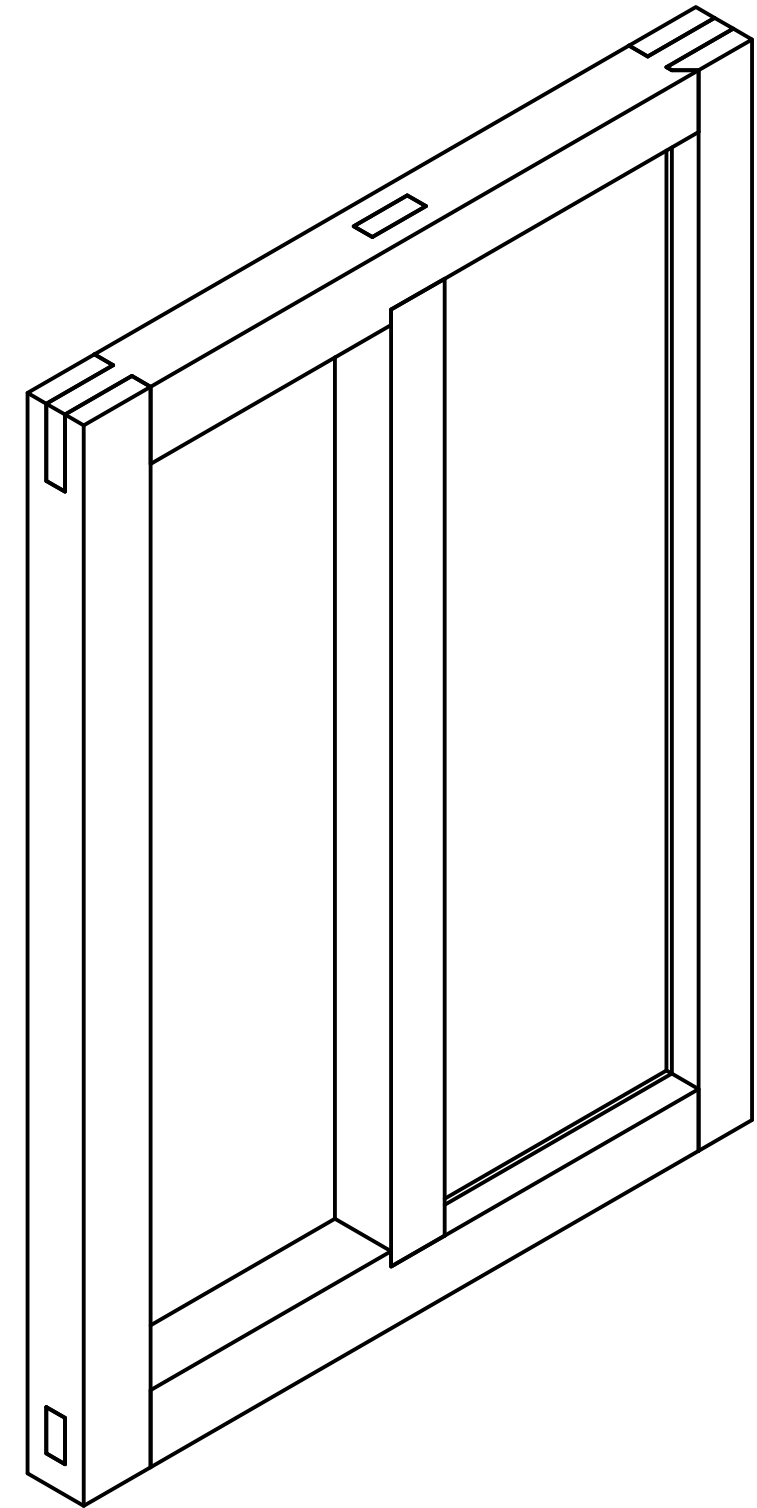
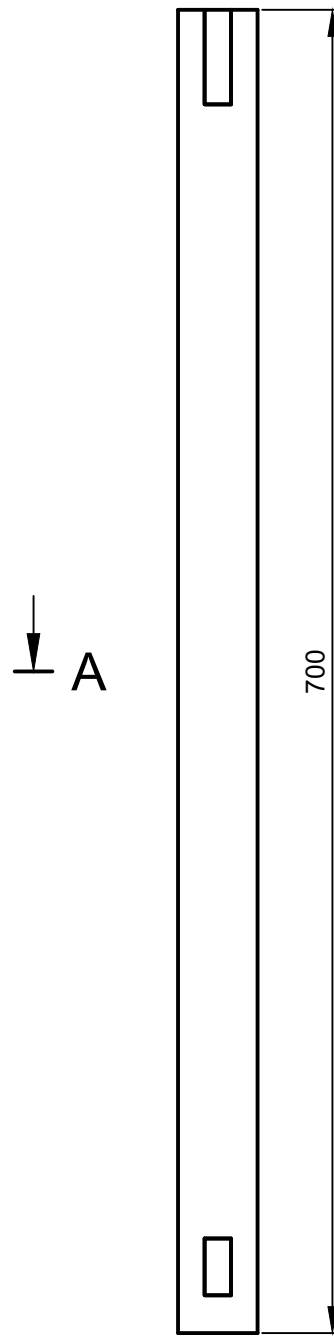
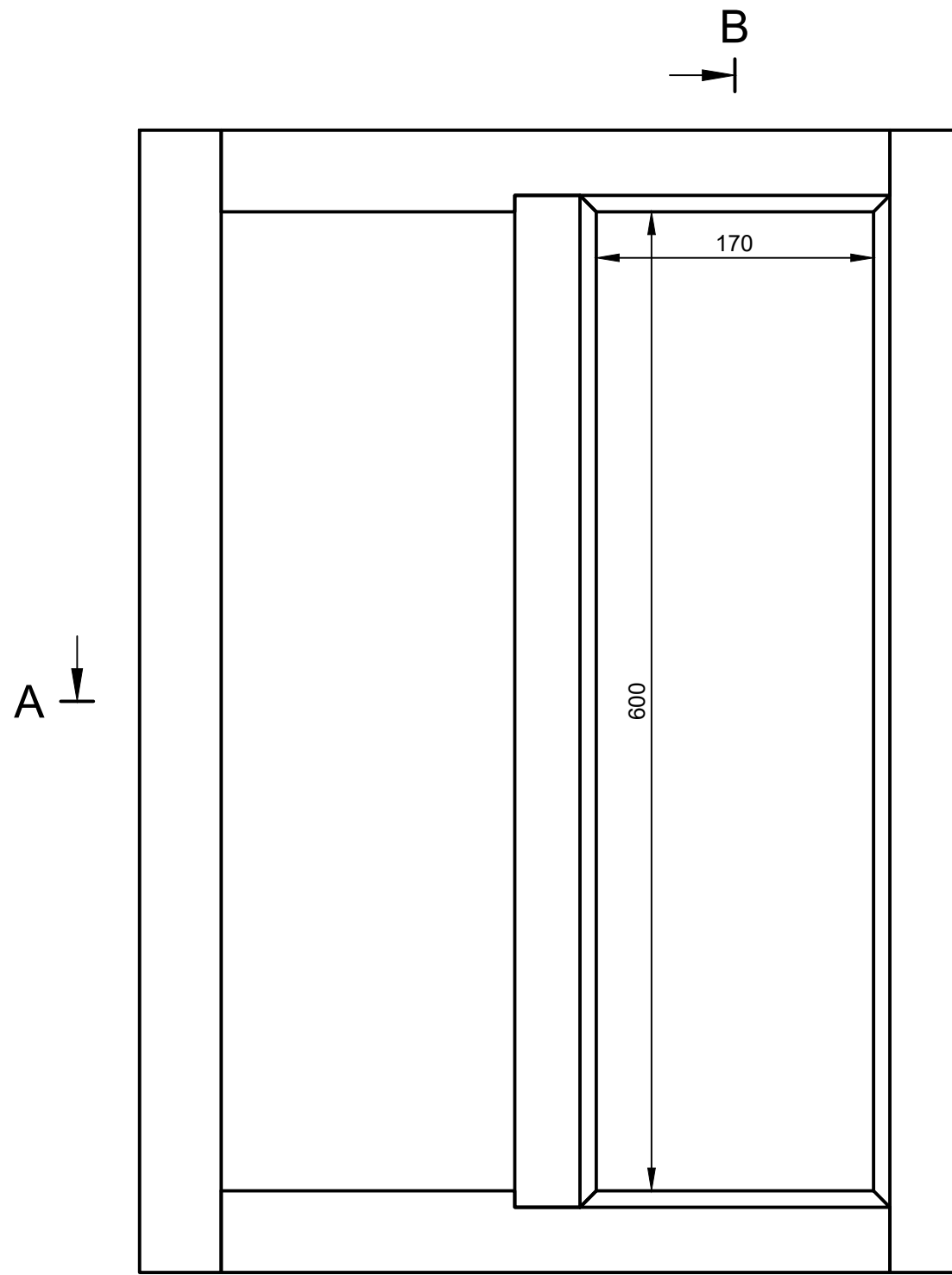
17. The entries will be evaluated according to the established evaluation criteria (Annex 2).

18. The chairman of the committee shall add the scores of each member of the committee and derive an arithmetic mean. The winner shall be the participant with the highest number of points.

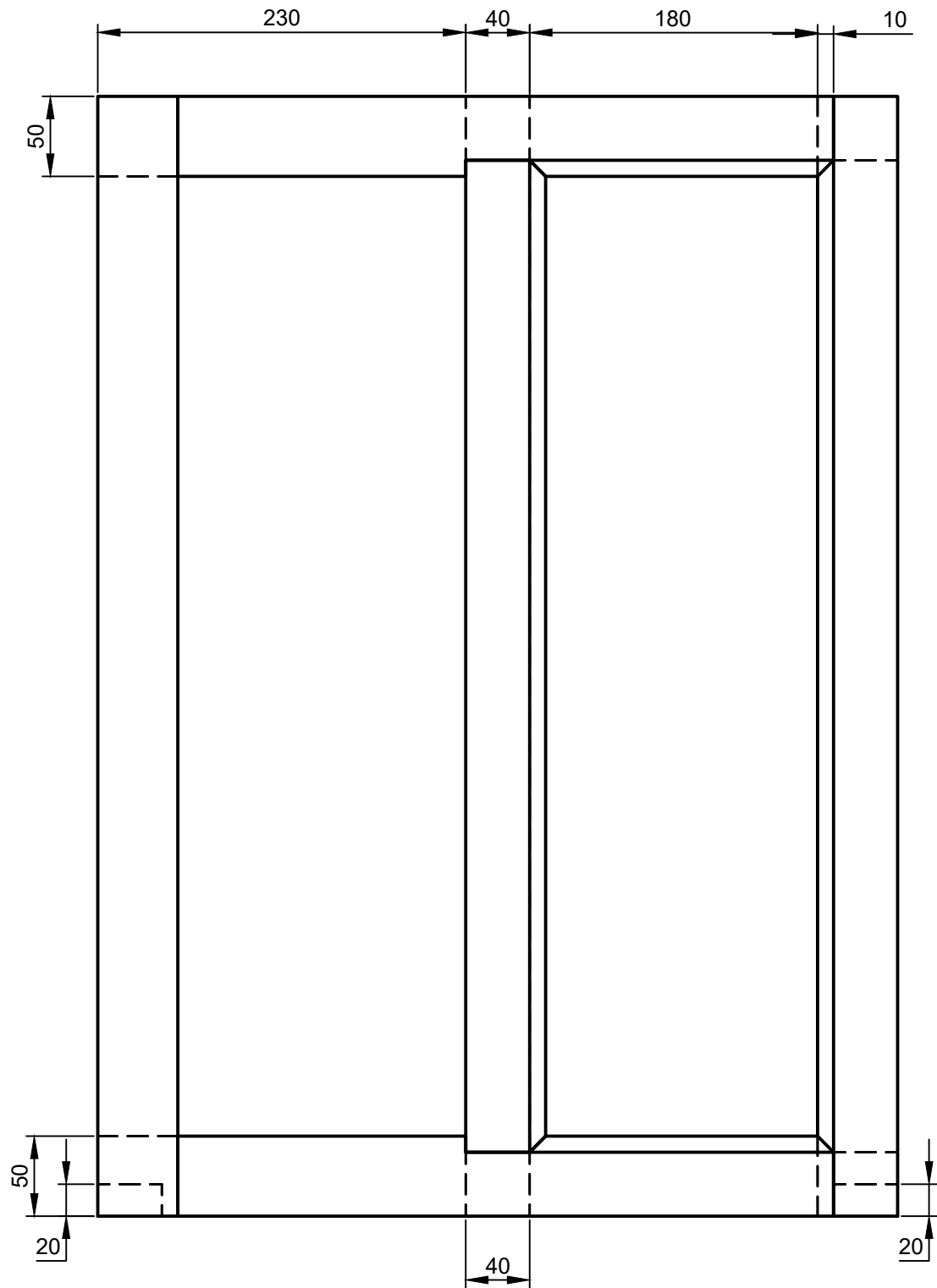
CHAPTER IV FINAL PROVISIONS

19. First, second and third prize winners are awarded. All participants receive a certificate of participation.

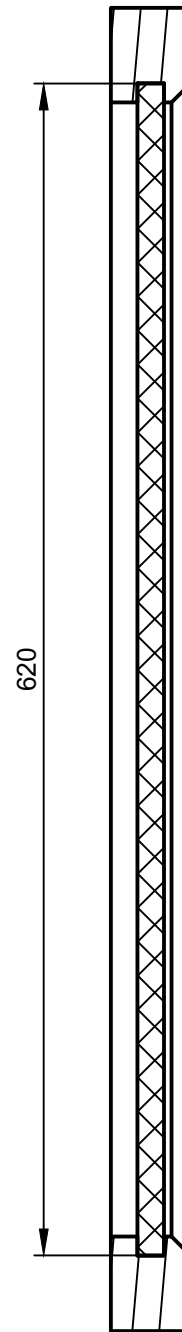
20. Additional information on the organisation of the competition is available from Dovydas Palijanskas, Senior Teacher, Woodworking Department, tel. +37064561637, e-mail: dovydas.palijanskas@kautech.lt



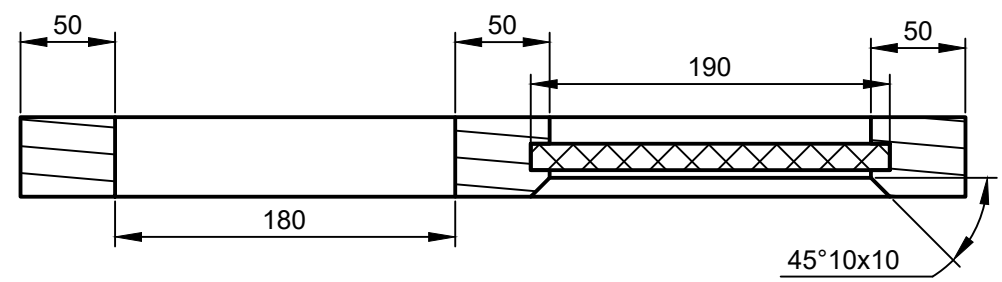
| | | | | |
|------------|----------------|----------------|------------|-------|
| Savininkas | Rengė | Antraštė | | |
| Kautech | D. Palijanskas | Langas/ Window | Laida | Lapas |
| | | | 2023-12-10 | 1/3 |



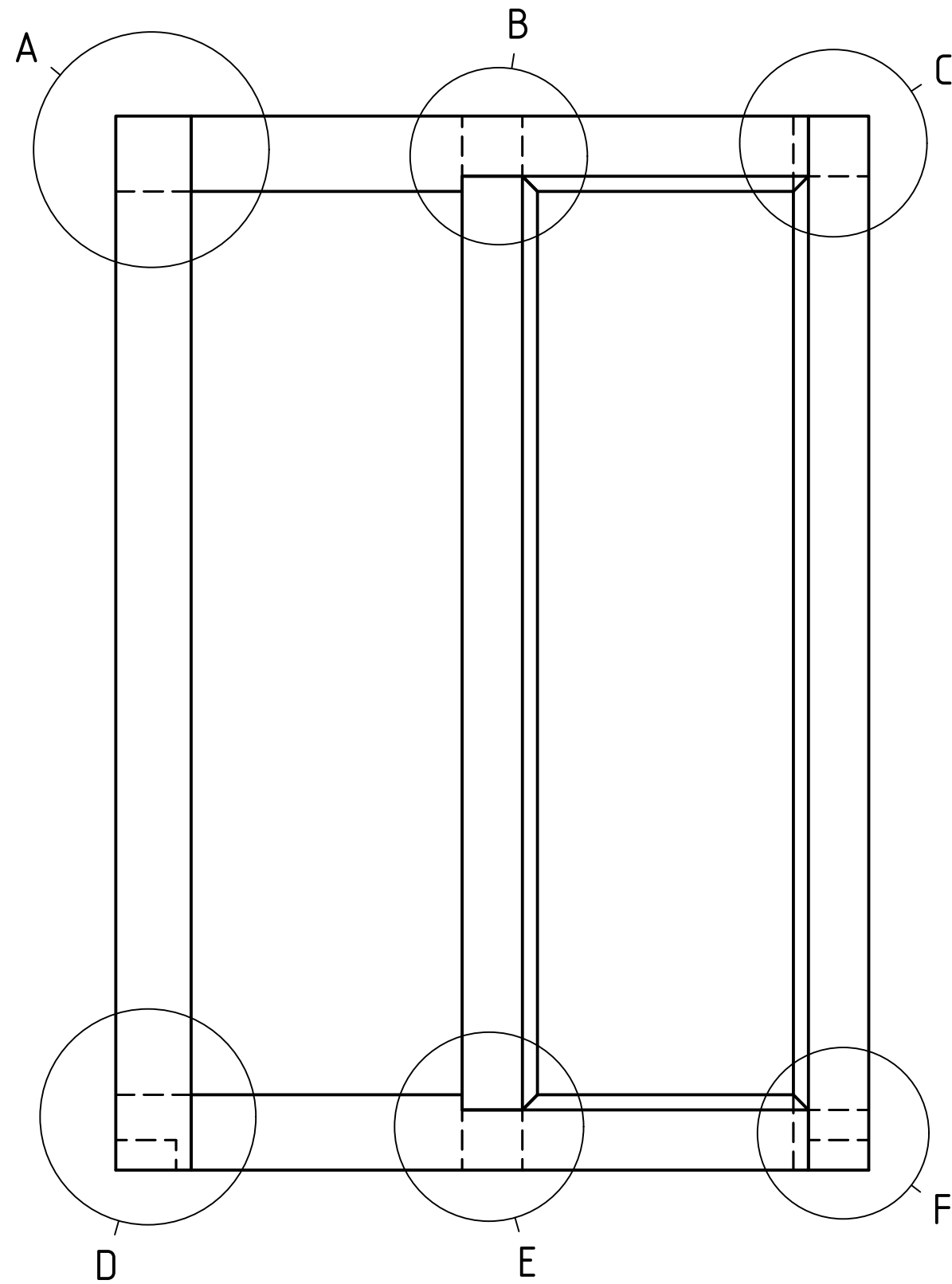
B-B



A-A



| | | | | | | |
|-----------------------|-------------------------|----------------------------|------------|------|-------|-------|
| Savininkas Kautech | Rengė D. Palijanskas | Antraštė Langas/ Window | Laida | Data | Kalba | Lapas |
| | | | 2023-12-10 | | 2/3 | |



| | | | | |
|-----------------------|--------------------|-------------------------|----------------------------|--|
| Savininkas Kautech | | Rengė D. Palijanskas | Antraštė Langas/ Window | |
| Laida | Data 2023-12-10 | Kalba | Lapas 3/3 | |

**Product Evaluation criteria of the International Professional Excellence
Competition "Joiner 2024"**

Marking scheme

| Joints | A | B | C | D | E | F |
|--|---|--|---|---|---|---|
| Marking inner joint before gluing | | | | | | |
| <p>0 Joint has been made to an unacceptable standard - extremely loose, does not fit or non-attempt. 1 - Joint has been made to an acceptable standard - some rough shoulders, shoulders not square, undercutting of joint, joint not clean and fit is very loose 2 - Joint has been made to a good standard - joint slightly loose or tight, some marks on shoulders, shoulders square, joint pushes all the way with ease and has some gaps on the sides of the joint 3 - Joint has been made to an excellent standard - clean shoulders, minimal gaps on all sides of the joint, joint is correct, pushed approx. 2/3 together without force and joint is flat / straight.</p> | | | | | | |
| Measurement | | | | | | |
| Max points 18 | | | | | | |
| Joint A - Measurement | | thickness of tenon, depth of mortise. +- 1 mm = 1 point over 1 mm = 0 | | | | |
| thickness of tenon 14 mm; depth of mortise 50 mm | | | | | | |
| Joint B - Measurement | | thickness of tenon, with of mortise. +- 1 mm = 1 point over 1 mm | | | | |
| thickness of tenon 14 mm; with of mortise 40 mm | | | | | | |
| Joint C - Measurement | | thickness of tenon, length of tenon. +- 1 mm = 1 point over 1 mm | | | | |
| thickness of tenon 14 mm; length of tenon 40 mm | | | | | | |
| Joint D - Measurement | | thickness of tenon, with of mortise. +- 1 mm = 1 point over 1 mm | | | | |
| thickness of tenon 14 mm; with of mortise 30 mm | | | | | | |
| Joint E - Measurement | | thickness of tenon, with of mortise. +- 1 mm = 1 point over 1 mm | | | | |
| thickness of tenon 14 mm; with of mortise 40 mm | | | | | | |
| Joint F - Measurement | | thickness of tenon, with of mortise. +- 1 mm = 1 point over 1 mm | | | | |
| thickness of tenon 14 mm; with of mortise 20 mm | | | | | | |
| IF ONE MEASUREMENT IS GOOD THEN IS 0,5 POINTS | | | | | | |
| Max points 6 | | | | | | |

| Joints | A | B | C | D | E | F |
|---|---|---|---|---|---|---|
| Exposed end grain of the joint | | | | | | |
| Description- Cleanliness and neatness of joint 0 - Joint has been made to an unacceptable standard - large gaps around the joint or non-attempt. 1 - Joint has been made to an acceptable standard - some rough shoulders, shoulders not square or straight, joint not clean with gaps. 2 - Joint has been made to a good standard - has some gaps on the sides of the joint 3 - Joint has been made to an excellent standard - clean shoulders, minimal gaps on all sides of the joint, joint is correct, and joint is flat along the shoulders. | | | | | | |
| Max point 18 | | | | | | |
| Measurement | | | | | | |
| Dimension 1 – Total window height 700 mm | Measurements within 1 mm = 2 points, within 2 mm = 1 points, over 2 mm = 0 points | | | | | |
| Dimension 2 – Total window with 500 mm | Measurements within 1 mm = 2 points, within 2 mm = 1 points, over 2 mm = 0 points | | | | | |
| Dimension 3 – inside window 600 mm | Measurements within 1 mm = 2 points, within 2 mm = 1 points, over 2 mm = 0 points | | | | | |
| Dimension 4 – inside window 170 mm | Measurements within 1 mm = 2 points, within 2 mm = 1 points, over 2 mm = 0 points | | | | | |
| Dimension 5 – inside window 180 mm | Measurements within 1 mm = 2 points, within 2 mm = 1 points, over 2 mm = 0 points | | | | | |
| Dimension 6 – F Joint from bottom to the end of tenon 40 mm | Measurements within 1 mm = 2 points, within 2 mm = 1 points, over 2 mm = 0 points | | | | | |
| Dimension 7 – D Joint from bottom to the end of tenon 50 mm | Measurements within 1 mm = 2 points, within 2 mm = 1 points, over 2 mm = 0 points | | | | | |
| Dimension 8 – Squareness of window | Measurements within 1 mm = 2 points, within 2 mm = 1 points, over 2 mm = 0 points | | | | | |
| Dimension 9 – B Joint from top left side of window to tenon 230 mm | Measurements within 1 mm = 2 points, within 2 mm = 1 points, over 2 mm = 0 points | | | | | |
| Dimension 10 – E Joint from bottom right left side of window to tenon 230 mm | Measurements within 1 mm = 2 points, within 2 mm = 1 points, over 2 mm = 0 points | | | | | |
| Max points 20 | | | | | | |

| Surface finish |
|---|
| 0 - Sanding to an unacceptable standard - many bumps; areas not sanded; machine marks present; not suitable to apply finish |
| 1 - Sanding to an acceptable standard - some bumps; most areas sanded; some machine marks present; acceptable to apply finish |
| 2 - Sanding to a good standard - limited bumps; most areas sanded; little or no machine marks; good surface to apply finish |
| 3 - Sanding to an excellent standard - no bumps; all areas sanded; no machine marks; very good surface to apply finish |
| Max points 3 |

| Workplace and safety | |
|--|------------------------------|
| Safe work | Judgment by jury 2-point max |
| Tidiness of workplace | Judgment by jury 2-point max |
| Safety equipment uses through work process | Judgment by jury 2-point max |
| Max points 6 | |

| Total points | | |
|----------------------------------|---------------------------------------|-----------------------|
| Inner joint before gluing | Exposed end grain of the joint | Surface finish |
| Judgment 18 Marking 6 | Judgment 18 Marking 20 | Judgment 3 |
| 24 | 38 | 3 |
| Workplace and safety – 6 | | |
| Total: 71 points | | |